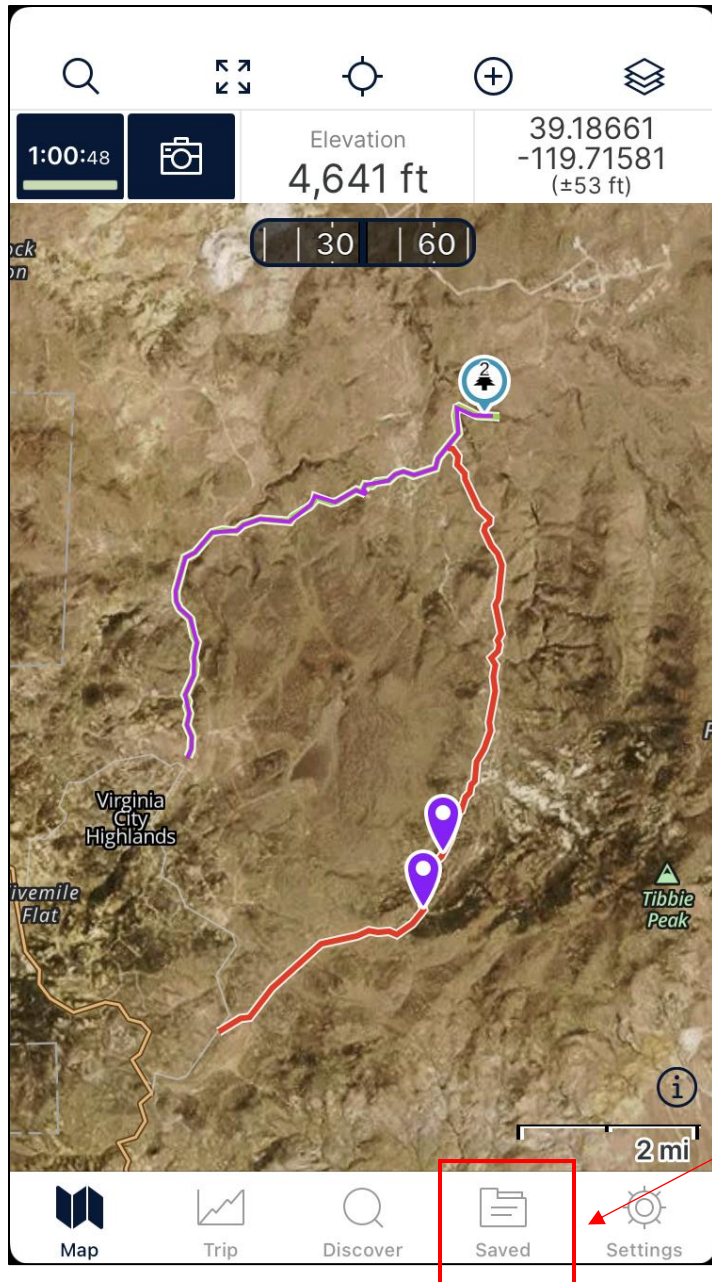


Exporting GPX File from Gaia App (iPhone / iPad)

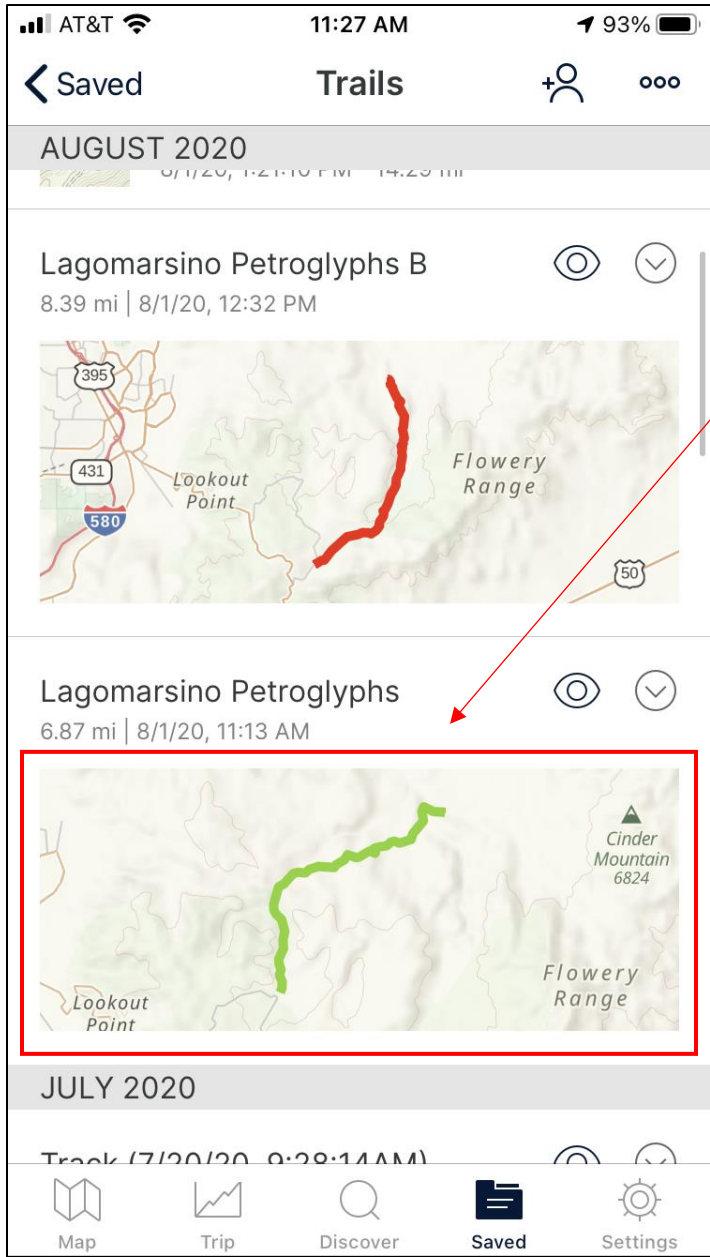


Launch the Gaia app on your iPhone or iPad (*iPhone used as example*)

You should see a screen that looks like this.

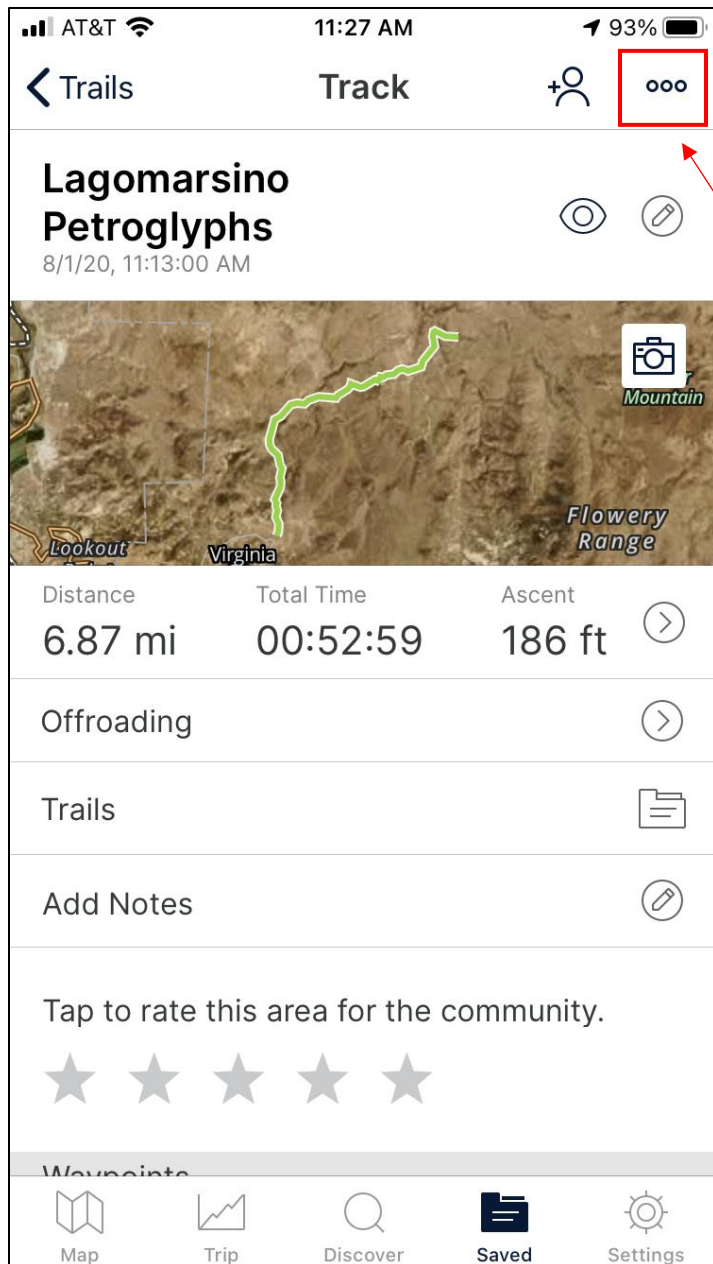
At this point, you have already mapped a trail and you saved it as a track in your Gaia app.

Navigate to the “Saved” section of the app, from the bottom navigation panel.



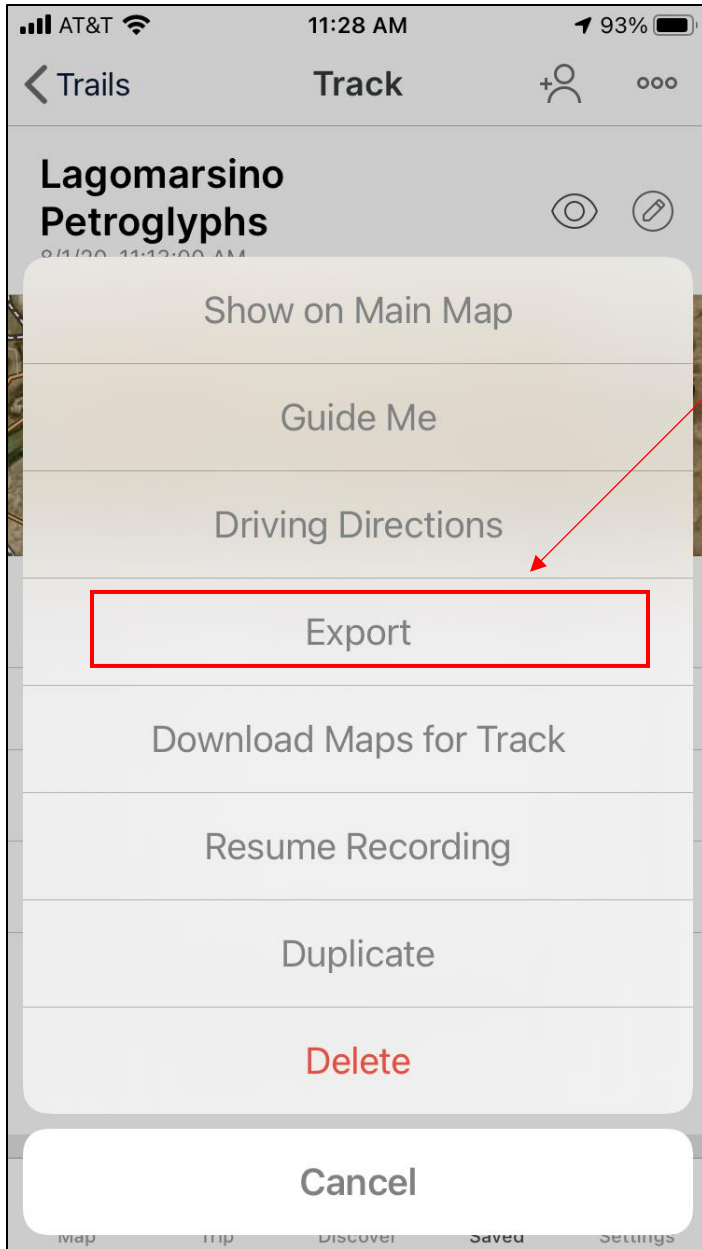
Select the trail you want to export by clicking on its map.

Your trail may be saved within other subfolders, depending on how you have things organized within the app.



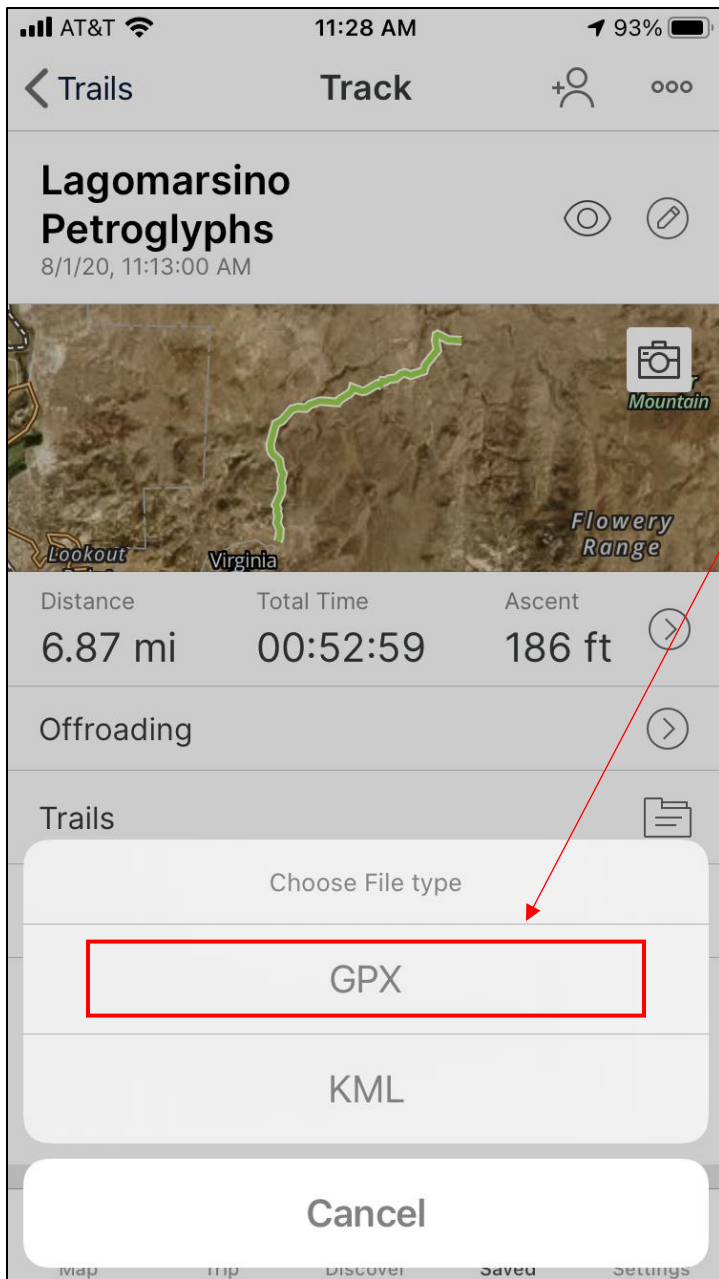
Once you have opened your track, you should see some stats and a track preview, like the picture to the left.

Press the three dots at the top right of the screen.



A menu will pop up from the bottom of the screen.

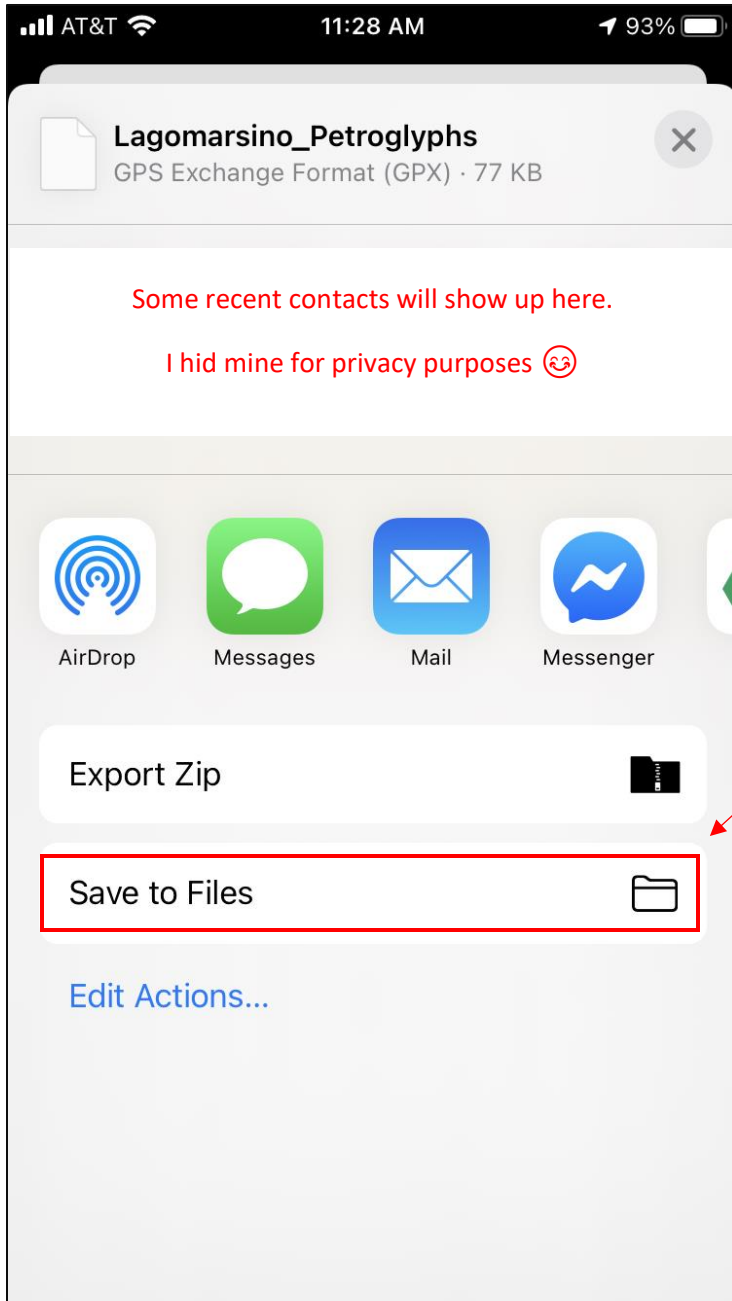
Press "Export".



The app will prompt you to select a format to use for the track export.

Select GPX.

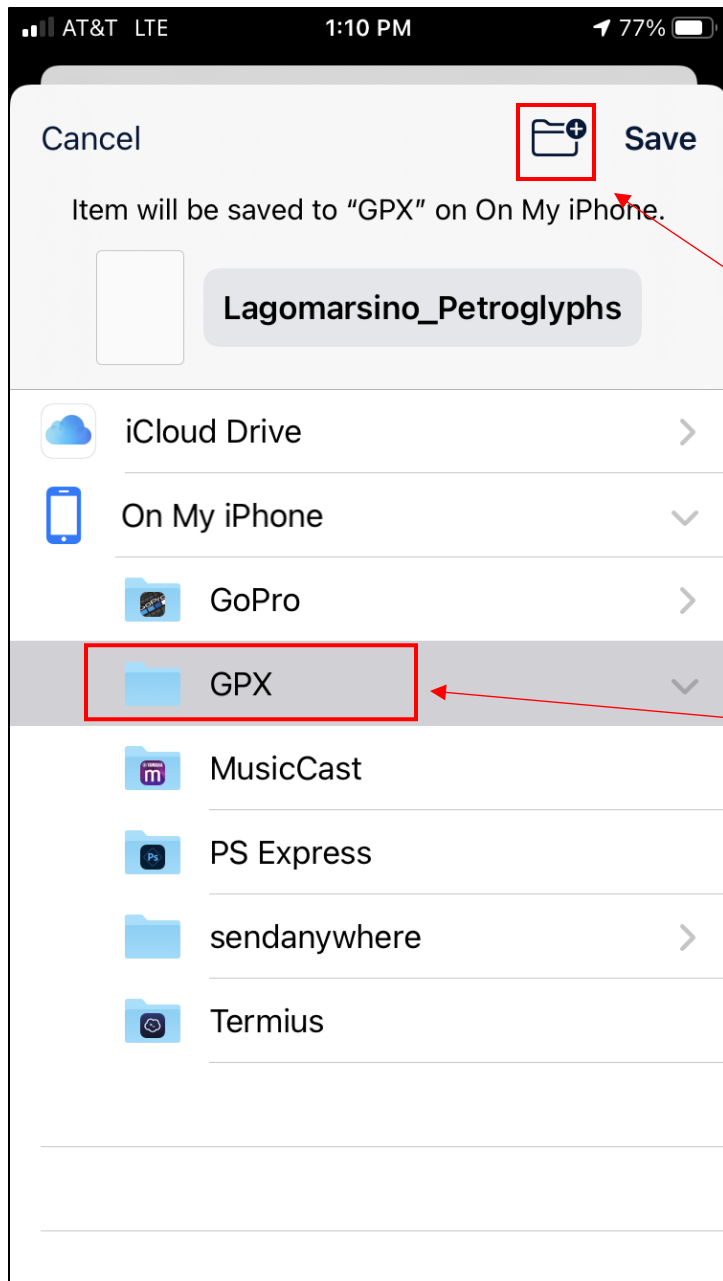
(KML support coming soon!)



On this screen, you will select the export method, and where to send the file.

In our case, on an iPhone or iPad, the easiest method is to simply save it to your device's files.

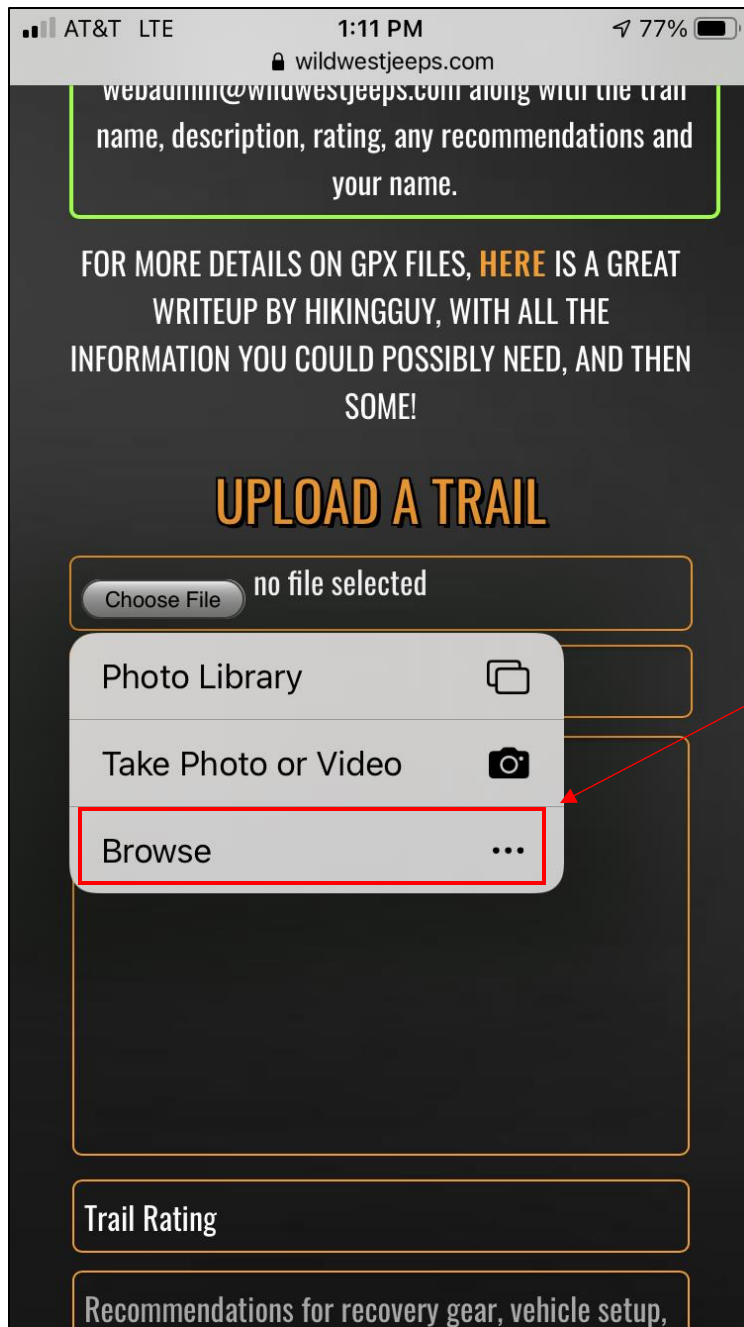
Press "Save to Files".



On this screen, you will select where the GPX file will be saved, within your device's file structure.

You can either create a new folder (follow the prompts to name your folder...)

If you already have a destination that you don't mind saving the file to, select it in the folder tree.

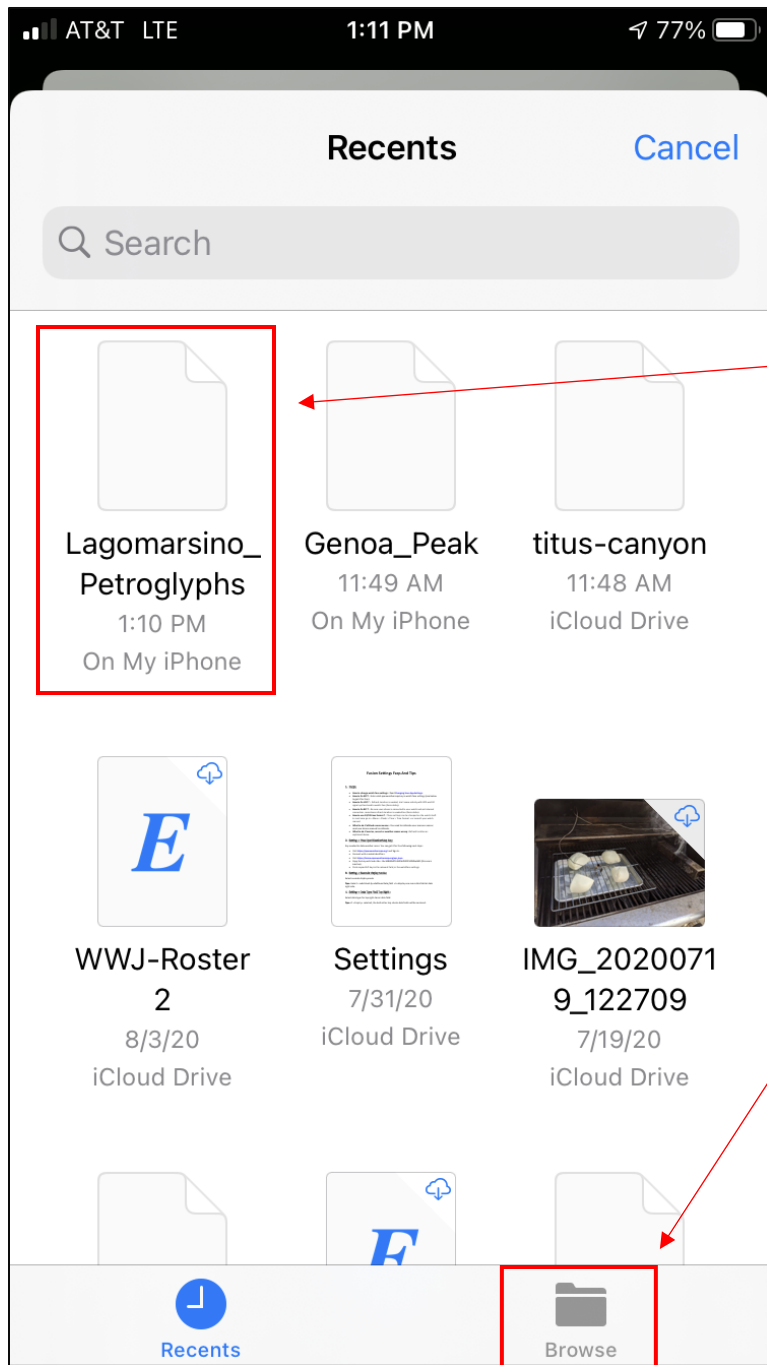


Once the GPX file is saved to your device, return to the trail upload page.

In the form, under "UPLOAD A TRAIL", select "Choose File".

Then press "Browse".

Upload page: <https://wildwestjeeps.com/trails/upload>



The upload form will now ask you which file you would like to upload.

Your file will probably appear in the "Recents" section.

If not, you should be able to find it from the "Browse" button below.

Click on your file. It will then be added to the form.

AT&T 3:48 PM 61%

wildwestjeeps.com

UPLOAD A TRAIL

Choose File Lagomarsino_Petroglyphs.gpx

Trail name

Trail description

Trail Rating

Recommendations for recovery gear, vehicle setup, lift, tires, etc...

Your name

Your email address

Press **UPLOAD** when ready!

UPLOAD

Your GPX file will be inserted into the file part of the form.

Fill in the rest of the form and press “UPLOAD”.

The system will check your file, and your form entries. If there are any issues, it will tell you!

Upon successful upload, the website will take you to the info page for the track you just added.

Make sure everything looks right, and you’re done!